

TAXING UNIT: 25

PART OF N.W. 1/4 OF SECTION 17, T.6N.,R.1W., S.L.B.&M

IN OGDEN CITY SCALE 1" = 100'

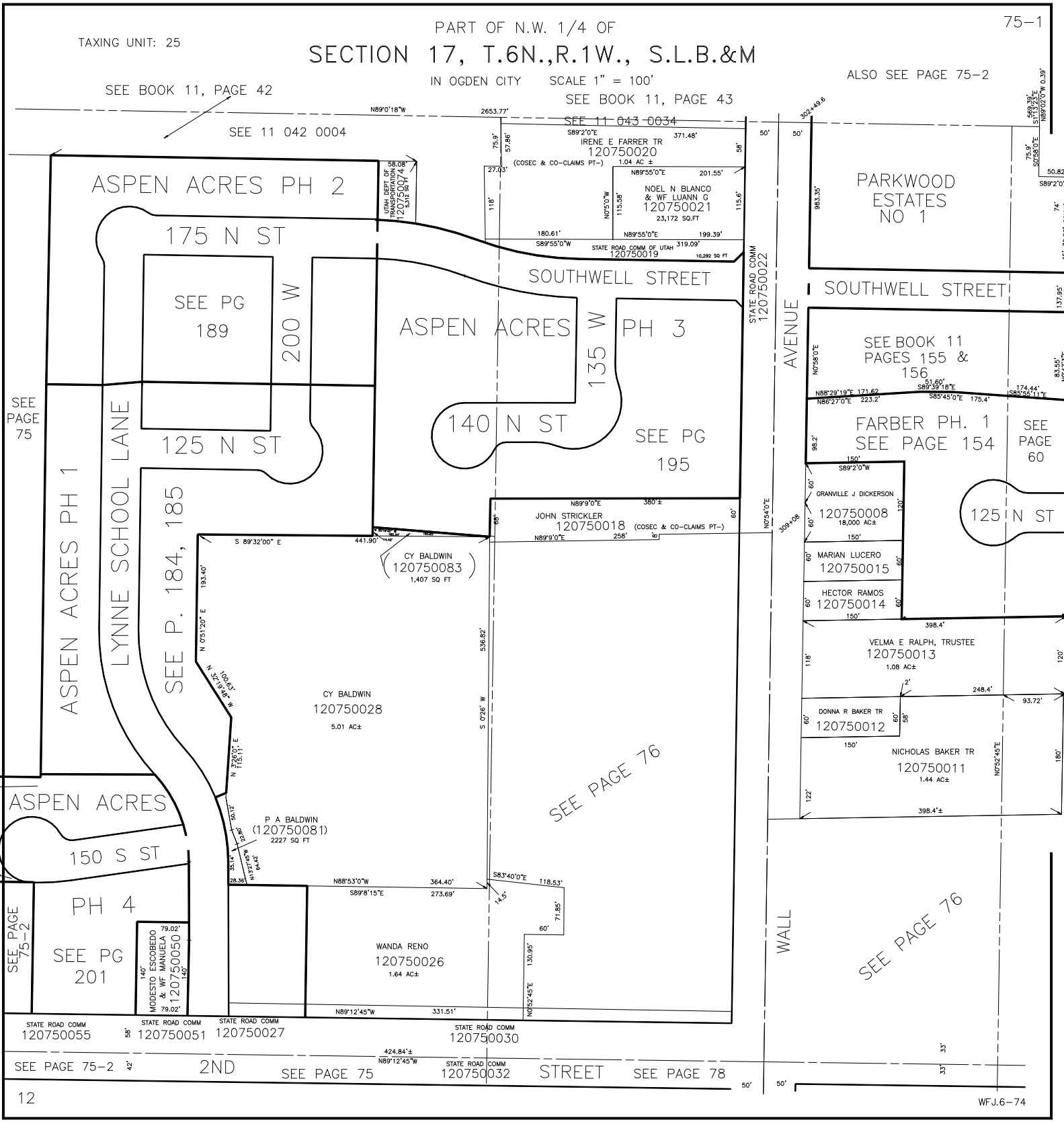
ALSO SEE PAGE 75-2

SEE BOOK 11, PAGE 42

SEE BOOK 11, PAGE 43

SEE 11 042 0004

SEE 11 043 0034



ASPEN ACRES PH 2

175 N ST

SEE PG 189

200 W

ASPEN ACRES PH 3

140 N ST

SEE PG 195

135 W

125 N ST

SEE P. 184, 185

ASPEN ACRES PH 1

LYNNE SCHOOL LANE

SEE PAGE 75

PARKWOOD ESTATES NO 1

SOWELL STREET

SEE BOOK 11 PAGES 155 & 156

FARBER PH. 1 SEE PAGE 154

SEE PAGE 60

GRANVILLE J DICKERSON 120750008

MARIAN LUCERO 120750015

HECTOR RAMOS 120750014

VELMA E RALPH, TRUSTEE 120750013

DONNA R BAKER TR 120750012

NICHOLAS BAKER TR 120750011

CY BALDWIN 120750083

CY BALDWIN 120750028

P A BALDWIN 120750081

WANDA RENO 120750026

STATE ROAD COMM 120750055

STATE ROAD COMM 120750051

STATE ROAD COMM 120750027

STATE ROAD COMM 120750030

SEE PAGE 75-2

2ND

SEE PAGE 75

STATE ROAD COMM 120750032

STREET

SEE PAGE 78